



FIREWISE USA[®]
RESIDENTS REDUCING WILDFIRE RISKS

WUI*
the
people....

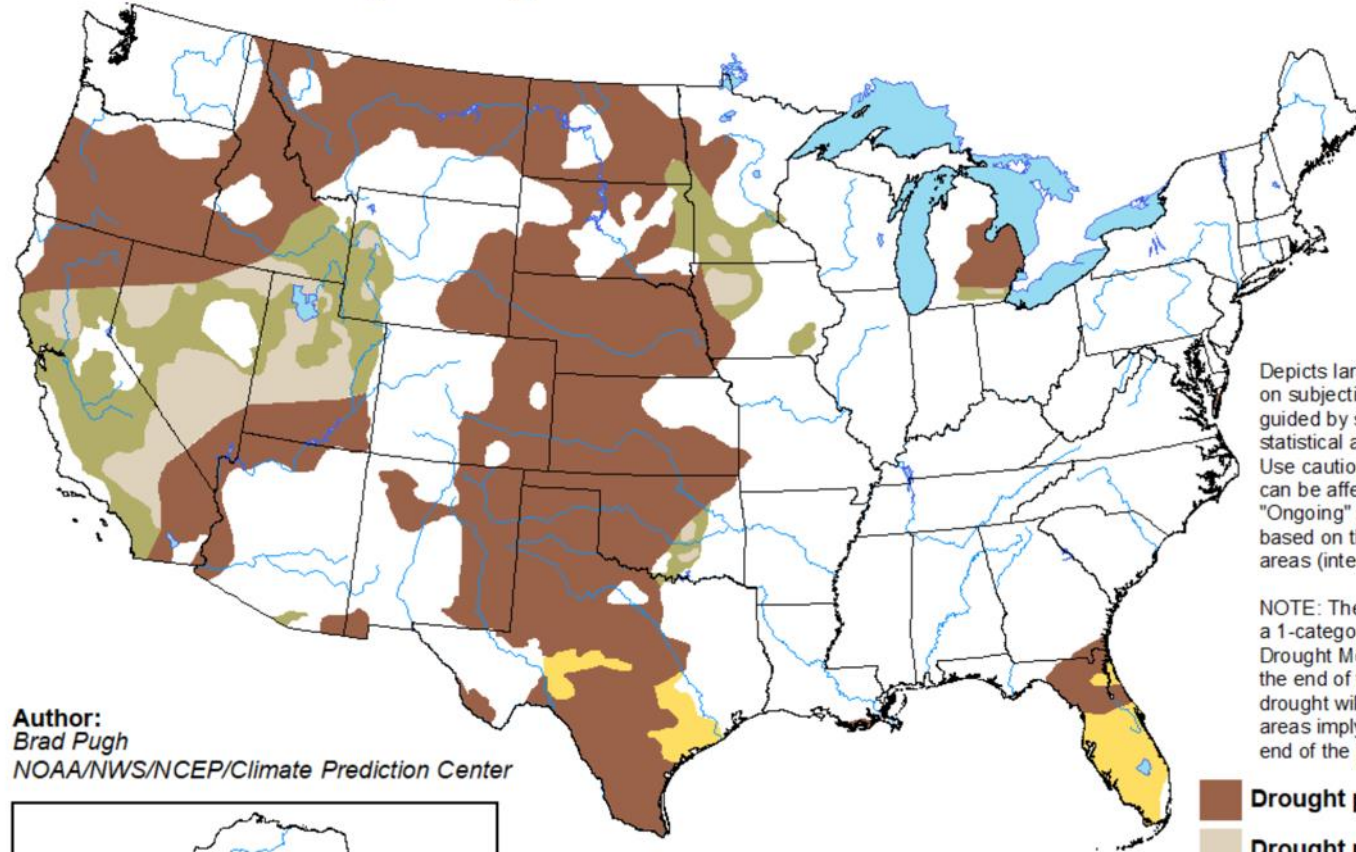
(* wildland-urban interface)

1. DROUGHT

cpc.ncep.noaa.gov

U.S. Monthly Drought Outlook Drought Tendency During the Valid Period

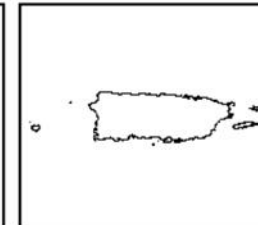
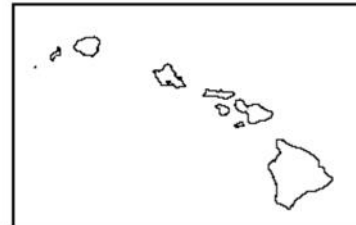
Valid for March 2023
Released February 28, 2023



Depicts large-scale trends based on subjectively derived probabilities guided by short- and long-range statistical and dynamical forecasts. Use caution for applications that can be affected by short lived events. "Ongoing" drought areas are based on the U.S. Drought Monitor areas (intensities of D1 to D4).

NOTE: The tan areas imply at least a 1-category improvement in the Drought Monitor intensity levels by the end of the period, although drought will remain. The green areas imply drought removal by the end of the period (D0 or none).

Author:
Brad Pugh
NOAA/NWS/NCEP/Climate Prediction Center



-  Drought persists
-  Drought remains but improves
-  Drought removal likely
-  Drought development likely



<http://go.usa.gov/3eZGd>



**2. DROUGHT-SENSITIVE
VEGETATION**



Humans / accidental ignitions

BBQs

Hot exhaust pipes

ATVs / combustion

Chainsaws

Cigarettes

Trash burning

Burn piles

Fire pits

Fireworks

Target shooting

Kitchen fires

Kids playing w matches

Dragging trailer chains

Mowers

Priest River man sentenced for setting wildfires



...admitted to setting six fires in the Priest River area in the summer of 2022 as well as three fires in 2021 in the same area.





Photo by [Brandon Morgan](#) on [Unsplash](#)

What do we get?

1. Free on-site evaluation (by local fire department) of your home's wildfire vulnerabilities
2. Expert guidance to help you fix those vulnerabilities
3. Triage!!!!
4. Access to generous grants
5. Possibly save on homeowners insurance
6. Raise the appeal of your home w/o raising its assessment
7. No real strings attached.

HERDING CATS



WUI the people

- self sufficient
- independent minded
- suspicious of government
- **socioeconomic tension**

WUI the people

**I can't
work
with
these
people**



- self sufficient
- independent minded
- suspicious of government
- socioeconomic tension

WUI the people

**I can't
work
with
these
people**



- self sufficient
- independent minded
- suspicious of government
- socioeconomic tension

DITTO











**Through the eyes of fire,
everything in your environment is
either a HEAT SOURCE or a
HEAT SINK.**

**It isn't only the vegetation that's
drought sensitive.
The built environment also can be
drought sensitive.**

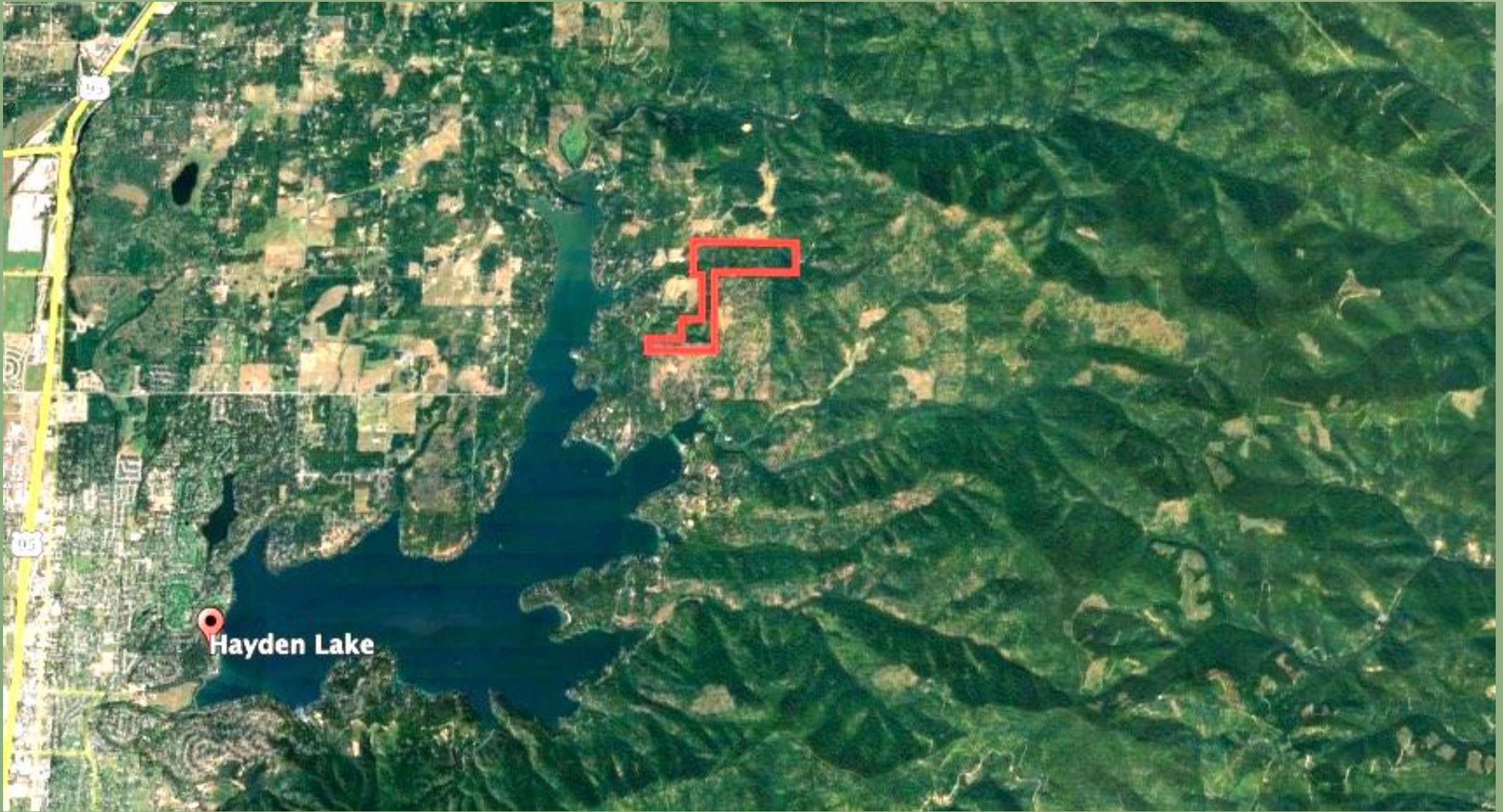
You can make it less so.

If one household is hardened against fire, it's a small isolated heat sink.

If a community becomes Firewise, it's a large, collective heat sink.

A firewall.





Hayden Lake

IF&G Forest
Management:

Wildlife habitat
diversity,
not
wildfire
mitigation



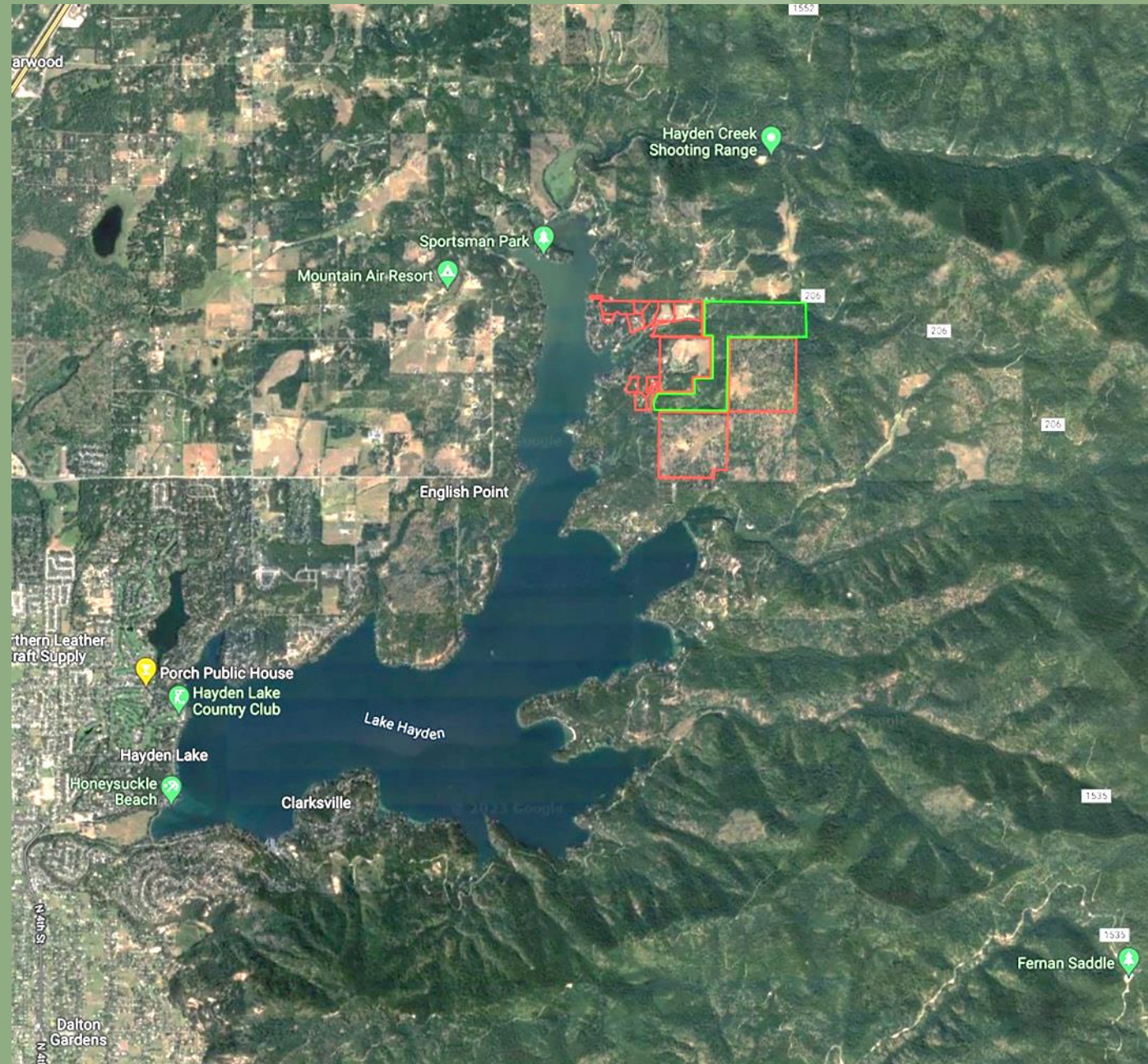
East of Hayden Lake

FIREWISE COMMUNITY



East of Hayden Lake Firewise Community Phase I

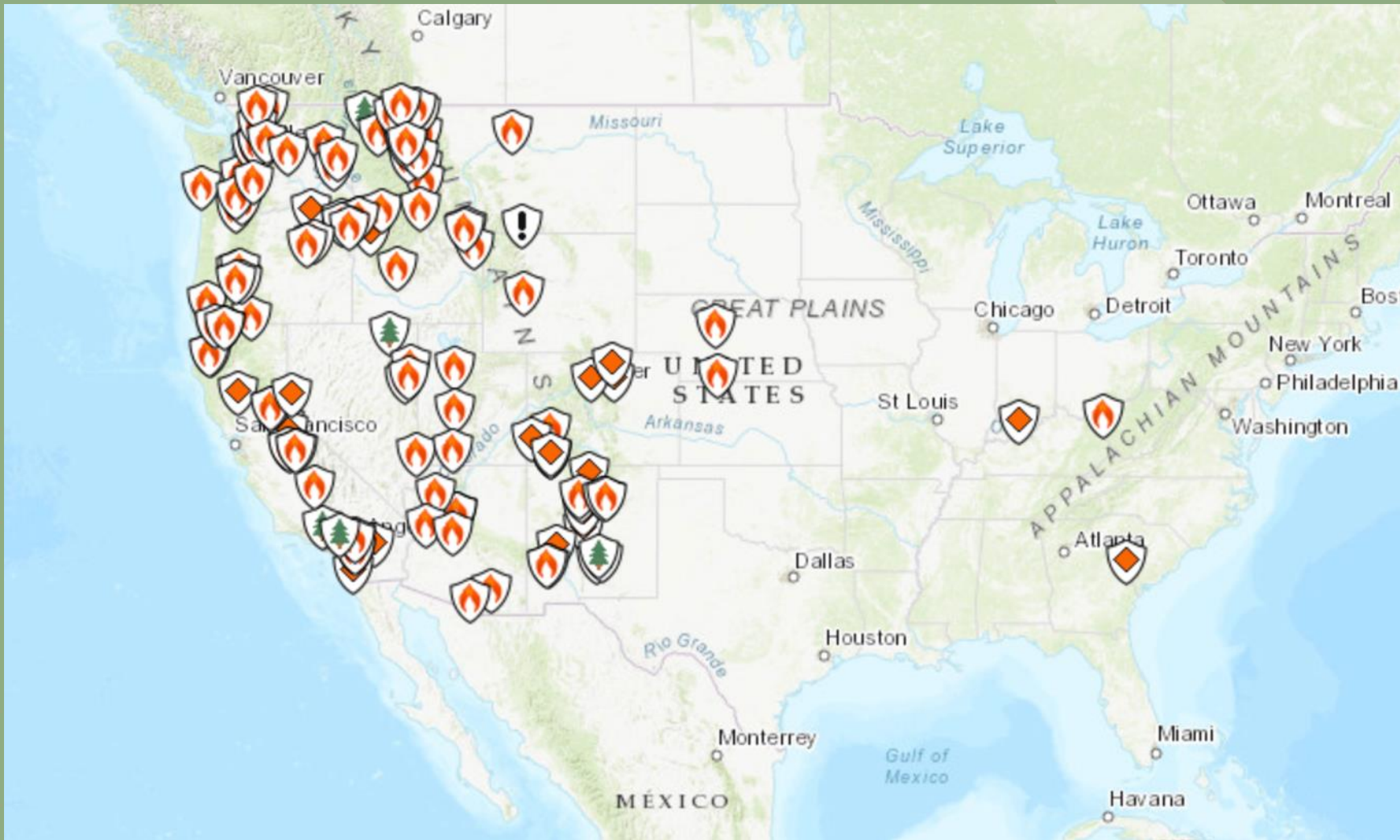
15 households
700 acres



ALERT!

**Kootenai
Sign Up Here**

**Emergency
Notification System**



<https://inciweb.nwccg.gov>



www.wildcad.net

WildCAD - Coeur d-Alene Interagency Dispatch Center

[Recent Incidents](#)

[Open Incidents](#)

[Incidents By Type](#)

[Incidents By Month](#)

[Calendar Year Summary](#)

[Resource Status](#)

[Incident Map \(Google Earth\)](#)

[Notes](#)

WildWeb 6.10.1
Bighorn Information
Systems

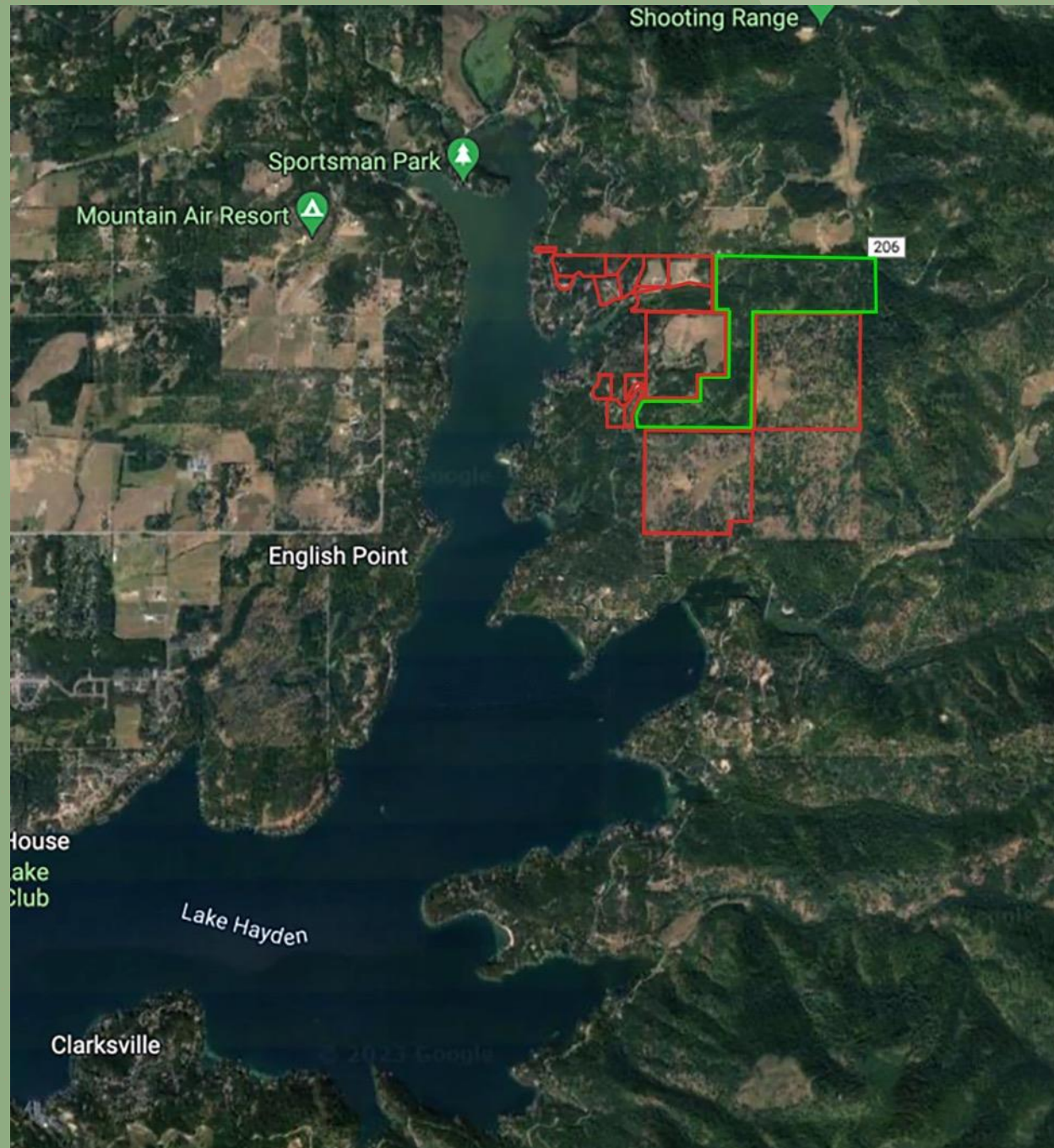
Open Incidents (Prepared 03/01/2023 10:49)

Date	Inc #	Name	Type	Acres	Location	Lat/Lon	Status	WebComment
02/17/2023 11:35	CDC-30	AZ-OZF CY23 Ozark-St Francis NF RX Sup	Resource Order
09/02/2022 14:21	IPF-653 P1 P1LC (0104)	Kootenai River Complex	Complex	20821	.	48 48.600, -116 30.714	.	.
09/01/2022 12:07	IPF-643 P1 EKS5 (0104)	Scotch Creek	Wildfire	2844	48 47.2051,-116 28.4821	48 47.202, -116 28.482	.	D7 Kootenai River Complex
08/24/2022 13:47	IPF-515 P1 EKS5 (0104)	Russell Mountain	Wildfire	14213	48 47.1618,-116 34.1519	48 47.160, -116 34.152	.	D7 Kootenai River Complex
08/21/2022 16:57	IPF-486 P1 /EKS5 (0104)	Trout	Wildfire	4785	48 49.4801,-116 33.1802 48 49.850,-116 32.737	48 49.842, -116 32.700	.	D7 Kootenai River Complex
08/11/2022 21:42	IPF-385 P1 /EKS5 (0104)	Eneas Peak	Wildfire	2298	48 52.705 x 116 29.352	48 52.698, -116 29.328	.	D7 Kootenai River Complex
08/08/2022 15:42	PLS-364 PN PZB8 (1522)	Lions Roar	Wildfire	45	48 44.648,-116 47.918	48 44.646, -116 47.910	Contain: 08/15/22 0630 Control: 08/18/22 1530	Controlled



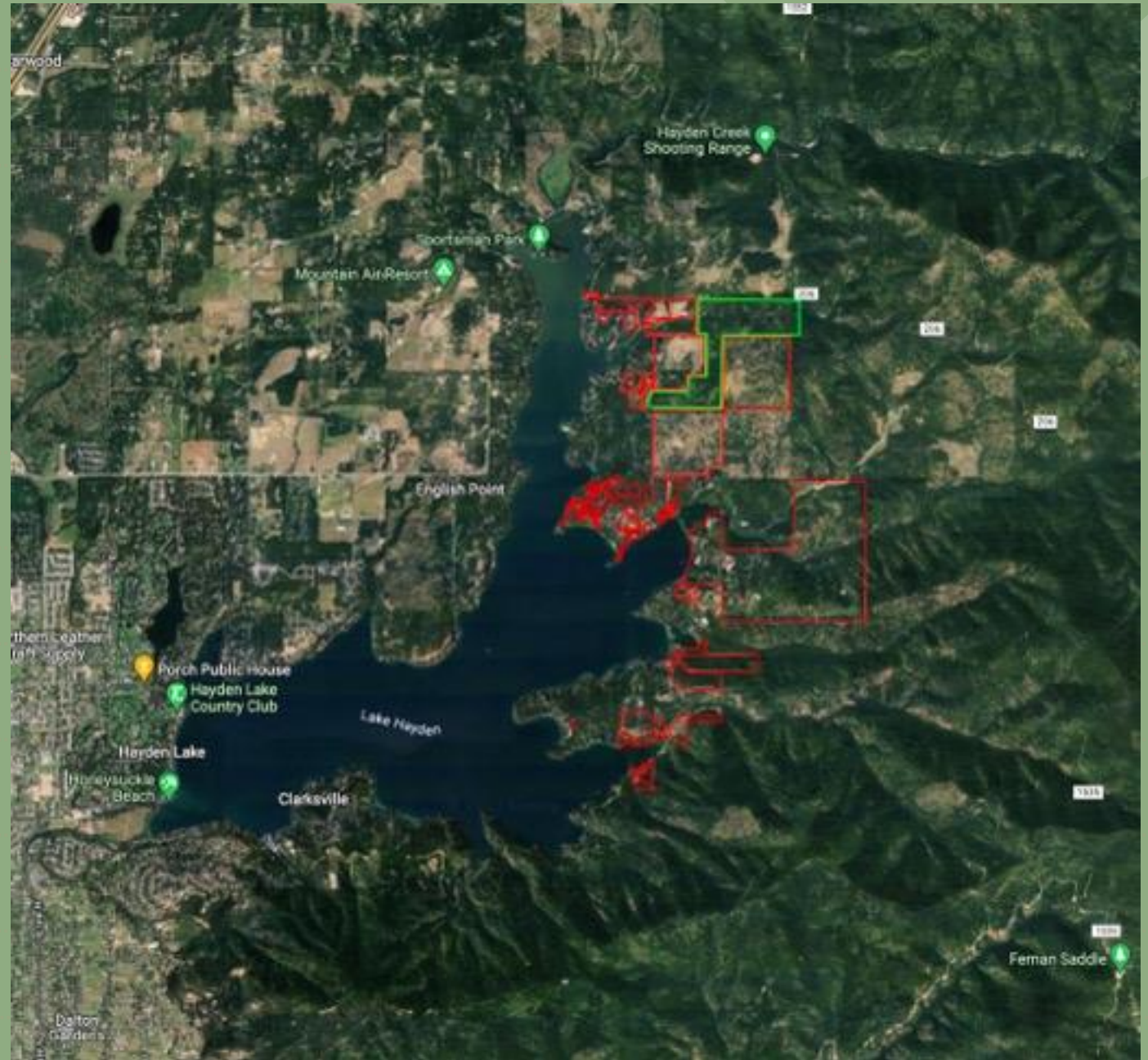
East of Hayden Lake
Firewise Community
2021

15 households
700 acres



East of Hayden Lake Firewise Community 2022

99 households
1650 acres



7418

East of Hayden Lake
Firewise Community



PERSUASION

What persuaded, what didn't

1st Meeting

Very Persuasive (credible, valuable)

4th of July

Very persuasive (anxiety)

TRIAGE

Very persuasive (anxiety)

IF&G

Persuasive (&\$%#*!)

Street signs

Very persuasive

9-1-1 Signs

?????

Fire station far away

Not persuasive at all

Don't judge experienced
1st responders who refuse
to join.

They're an asset.

Welcome them in
whatever way they allow.

Go to
nfpa.org

NFPA.org Catalog NFPA LiNK® Xchange™ NFCSS™ NFPA Journal® Sparky® Fire Prevention Week™ More ▾

NATIONAL FIRE PROTECTION ASSOCIATION
The leading information and knowledge resource on fire, electrical and related hazards

SIGN IN CART (0)

CODES & STANDARDS | SOLUTIONS | NEWS & RESEARCH | TRAINING & CERTIFICATION | PUBLIC EDUCATION | MEMBERSHIP | EVENTS

NFPA LiNK
Your window to productivity

SIGN UP FOR A FREE TRIAL

CONFERENCE & EXPO
CONFERENCE & EXPO | JUNE 19-21
TECHNICAL MEETING | JUNE 22-23
LAS VEGAS, NV

Try NFPA LiNK® for Two Weeks

Access, share, and collaborate with NFPA LiNK® and put digital codes and standards at your fingertips.

[TRY FREE >](#)

Registration is Open

Register early and reserve your spot for access to new safety products and the ability to connect with thousands of other NFPA® members, NFPA staff, and fire, electrical, and life safety stakeholders from all around the globe!

[REGISTER NOW >](#)



PUBLIC EDUCATION

Public Education	
Fire causes & risks	-
Top fire causes	+
Regional risks	+
Seasonal fire causes	+
Specific groups at risk	+
Behavioral risks	+
Wildfire	-
Firewise USA®	-
How to become a Firewise USA® site	+
Firewise USA® resources	+
Firewise USA® success	
Sites of Excellence	

Public Education / Fire causes & risks / Wildfire / Firewise USA® / How to become a Firewise USA® site



FIREWISE USA® RESIDENTS REDUCING WILDFIRE RISKS

How to become a Firewise USA® site

Select Language ▾

How does the Firewise USA® program work?

Organize it

Create a board or committee of volunteers to represent your community, including residents and partners such as local forestry agencies or the fire department. Identify a resident leader who will be the program point of contact. The board or committee defines the boundaries of the site and determines the number of individual single family dwelling units.

Community size: Minimum of 8 dwelling units and a maximum of 2,500. Multiple Firewise USA sites can be located within a city/town or master-planned community/HOA.

Plan it

The board or committee will collaborate with their local wildfire expert to complete a **community wildfire risk assessment**. The assessment should be a community-wide view that identifies areas of successful wildfire risk reduction and areas where improvements could be made. Emphasis should be on the general conditions of homes and related home ignition zones. The assessment is a living document and **needs to be updated at a minimum every 5 years**.

- Contact your state liaison to learn more about the requirements and how to get started
- Some states use the Firewise USA template. (PDF)



Live Chat



A landscape of rolling mountains in shades of blue and green, with a line of evergreen trees in the foreground. The mountains are layered, creating a sense of depth. The sky is a pale, hazy blue. The foreground shows the dark green tops of evergreen trees.

Thank you.