



IDAHO DEPARTMENT OF LANDS



COMMUNITY WILDFIRE PREPAREDNESS PLANS (CWPP) And Why They Matter!

2023 Family Forest Landowners
and Managers Conference
March 2023– Moscow, Idaho

IDL CWPP Contact



Tyre Holfeltz

Wildfire Risk Mitigation Program Manager
Idaho Department of Lands

Local County Perspective



Nick Zahler
Fire Mitigation Program Manager
Bonner County Emergency Management



County Wildfire Preparedness Plan

A County Wildfire Preparedness Plan is a long-term collaboratively generated plan that addresses community fire related issues.

IDL CWPP Standards

Many of the below elements are likely sprinkled throughout your all hazard plan document, which is fine. Please do not feel obligated to duplicate information in the fire chapter/sections, as it ultimately only adds additional work for the county and/or its contracted authors.

- 1) List the planning participants with contact info (must be a crosswalk of all agencies that have anything to do with wildfire, i.e. City, County, State, Fed, planners, PD, FD, residents etc...)
- 2) A description of the county that captures the essence of what makes the county the county. Should include such elements as; population, governments, assets, transportation infrastructure, other valuable resources, geography, general vegetation types, etc. (this may already be in the AHMP somewhere and does NOT need to be reproduced for the wildfire chapter)
- 3) A clear description and map of the WUI and how it is defined. IDL advocates for the following definition which can be easily mapped at a HUC12 level – *WUI is an area where developed lands interact with undeveloped lands and includes the infrastructure and natural resources communities rely on for existence.*
- 4) A risk assessment and map must be completed and capture elements that contribute to wildfire risk (i.e. fire history, slopes, aspects, weather, vegetation condition etc.), the process should be clear, defensible and replicable (IDL has a very simple model and map that is being widely used here in Idaho that can shared as a starting point)
- 5) A list of mitigation projects that is comprehensive and covers all the land agencies and private lands within the county. The project list should also outline education projects, infrastructure improvements, response capacity needs and maintenance that will need to be done. **Projects should not be general in nature, rather should show clear, meaningful site specific details.**
- 6) A list of resources or reference to all of the various response agencies equipment, tools and personnel that are available for fire response and if possible should include locations (map too) of natural and manmade water resources. This may already exist in the several other forms and housed at local dispatch centers, if so just reference its existence and housed locations.
- 7) A list or narrative that provides details on what projects, across all jurisdictions, that have been successfully completed (often this is accompanied with a map to visually represent geographic location of completed efforts)
- 8) NOT REQUIRED BUT RECOMMENDED – a pre-attack plan that outlines how communications, evacuation, command centers, etc will be handled/needed/used during a wildfire event.



Development and Review Process

Ideal Process is County-Wide

Engage all
Identify Risk
Action



BONNER COUNTY WILDFIRE PROTECTION PLAN

Bonner County Wildfire Protection Plan
Bonner County, ID

General County Plan Components

County Info

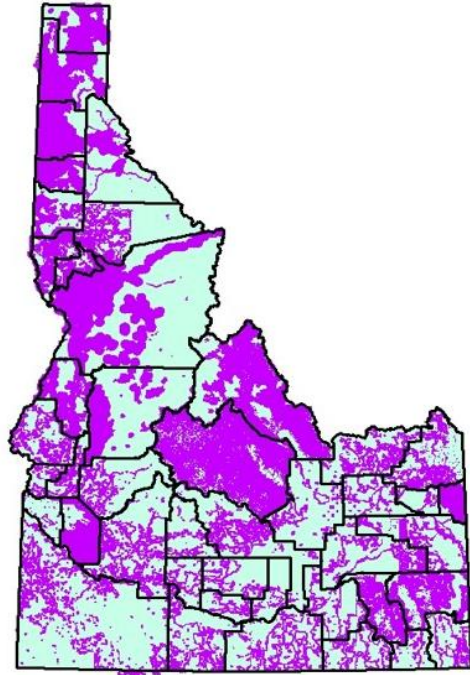
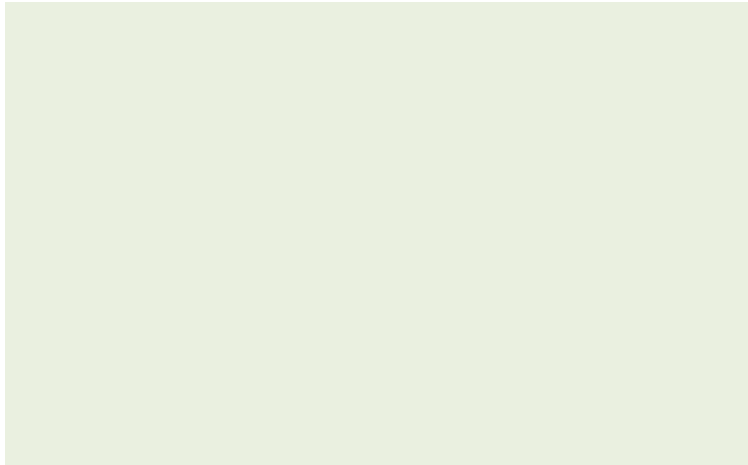
WUI Defined

Risk Modeled

Projects Listed

Resources

Accomplishment

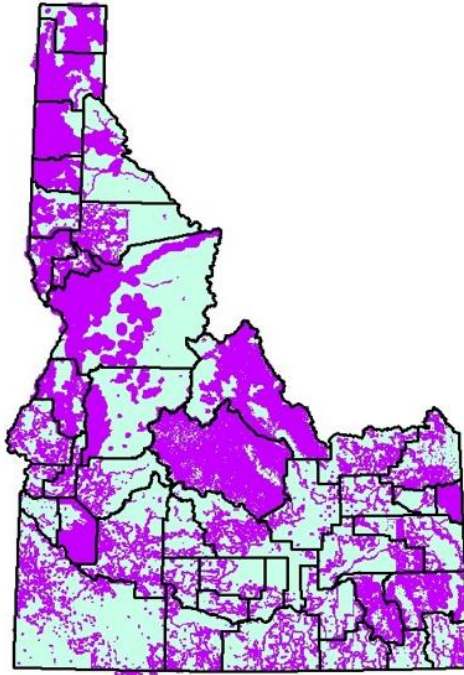


Wildland Urban Interface

What is it?

Where is it?

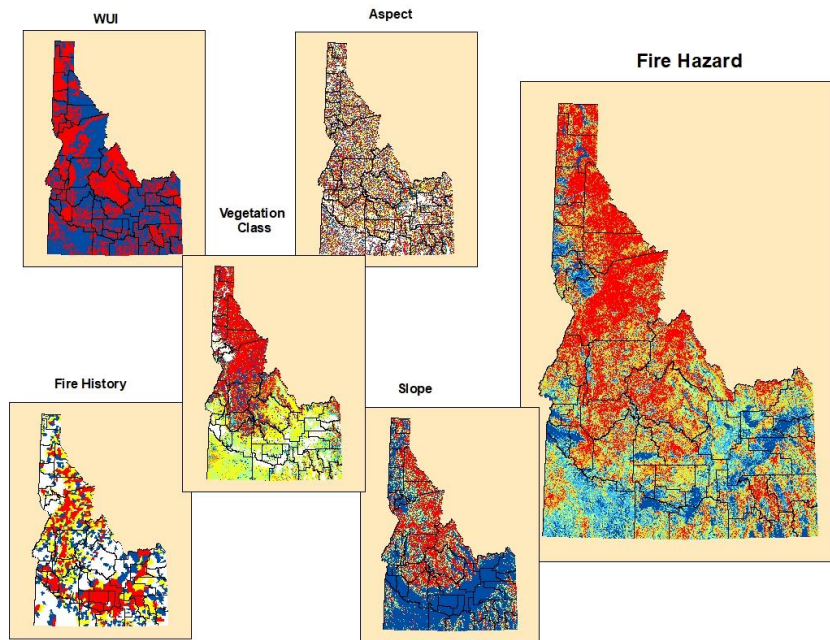
Am I really in it?



Wildland Urban Interface

Definition: Is an area where developed lands interact with undeveloped lands and includes the infrastructure and natural resources communities rely on for existence.

Location: It is found in remote scattered development areas to highly developed urban areas and everywhere in between.



Fire Hazard Value

- Very Low Potential for Damage
- Low Potential for Damage
- Moderate Potential for Damage
- High Potential for Damage
- Very High Potential for Damage

Wildfire Risk or Probability of Damage

**MEMORANDUM OF UNDERSTANDING
BETWEEN
THE STATE OF IDAHO, OFFICE OF EMERGENCY MANAGEMENT
AND
THE STATE OF IDAHO, DEPARTMENT OF LANDS**

REGULATORY INTEGRATION AND INTERCHANGEABILITY OF THE IDAHO STATE HAZARD MITIGATION PLAN WILDFIRE CHAPTER AND THE COMMUNITY WILDFIRE PROTECTION PLAN

1. The parties to this Agreement are the State of Idaho, Office of Emergency Management ("IOEM") and the State of Idaho, Department of Lands ("IDL").

2. This agreement is authorized under the provisions of Idaho Statute: TITLE 4

3. The purpose of this Agreement is to set forth terms by which the IOEM and IDL will integrate and make interchangeable the Wildfire chapter of the Idaho State Hazard Mitigation Plan ("ISHMP") and the Community Wildfire Protection Plan ("CWPP").

State of Idaho Hazard Mitigation Plan

Memorandum of Understanding between IOEM and IDL

January 2015

Updated February 2018

Integration and Interchangeability of the Wildfire Chapter of the Idaho State Hazard Mitigation Plan

Types of Grants



USDA Forest Service Community Wildfire Defense Grant Program

Community Wildfire Defense Grants (CWDG) help communities plan for and mitigate wildfire risks.

[Learn More](#)



Landscape Scale Restoration

A competitive grant program that promotes collaborative, science-based restoration of priority forest landscapes. Find more information about the LSR Grant Program.

[Learn More](#)



Western State Fire Managers

A competitive grant program funding fire risk mitigation efforts in the Wildland Urban Interface. Find details about the WSFM Grant Program.

[Learn More](#)



Hazardous Fuels Reduction

This competitive grant program focuses on hazard fuel reduction, restoration, prevention education, and county wildfire protection planning.

[Learn More](#)

Fire Mitigation Grants Through IDL

Education/Outreach, Planning, & Implementation Grants

Visit the link below:

[Idaho Department of Lands Forestry and Fire Grants](#)

Resources for Private Forest Landowners

Landowners seeking funding for fuels mitigation and/or forest restoration should contact an local IDL Private Forestry Specialist for assistance. Contact your nearest [Supervisory Area](#).



Landowner Assistance

Forestry Specialists provide assistance to help landowners maintain their property, enhance forest habitat and maximize financial benefits.

[Learn More](#)



No Boundaries Forestry

No Boundaries Forestry helps address more than 1 million acres of Idaho forestlands designated as high-potential catastrophic wildfire.

[Learn More](#)

Private Landowner Resources


Connecting to the various IDL landowner assistance programs



- **Steering Committee Experts**
- **Meetings/Discussions**

Bonner County

A local perspective
on
Committee

- 
- Listed CWPP projects
 - Project location
 - Grant administration
 - Project planning
 - Project implementation

Bonner County

A local perspective
on
Projects

- CWPP-
<https://www.bonnercountyid.gov/departments/EmergencyManagement>
- Bob Howard, Director of Bonner County Emergency Management
Office: (208) 255-5681
Bob.Howard@bonnercountyid.gov
- Nick Zahler, Fire Mitigation Program Manager
Office: (208) 255-5681 or Cell: (208) 946-9513
Nicholas.Zahler@bonnercountyid.gov

Bonner County

Link

&

Contact

Thank you – Questions?



TYRE HOLFELTZ

Wildfire Risk Mitigation Program
Manager

Idaho Department of Lands

208-666-8653

tholfeltz@idl.idaho.gov



BOB HOWARD

Director

Bonner County Emergency
Management

208-265-8867

Bob.howard@bonnercountyid.gov