

Yellowstone to Yukon A Vision of Connected Landscapes

Eric Greenwell, Senior Connectivity Specialist

Caitlin Jacobs, Wildlife Coexistence Coordinator



**Yellowstone to Yukon
Conservation Initiative**

Yellowstone to Yukon Region

AREA

500

THOUSAND MI²

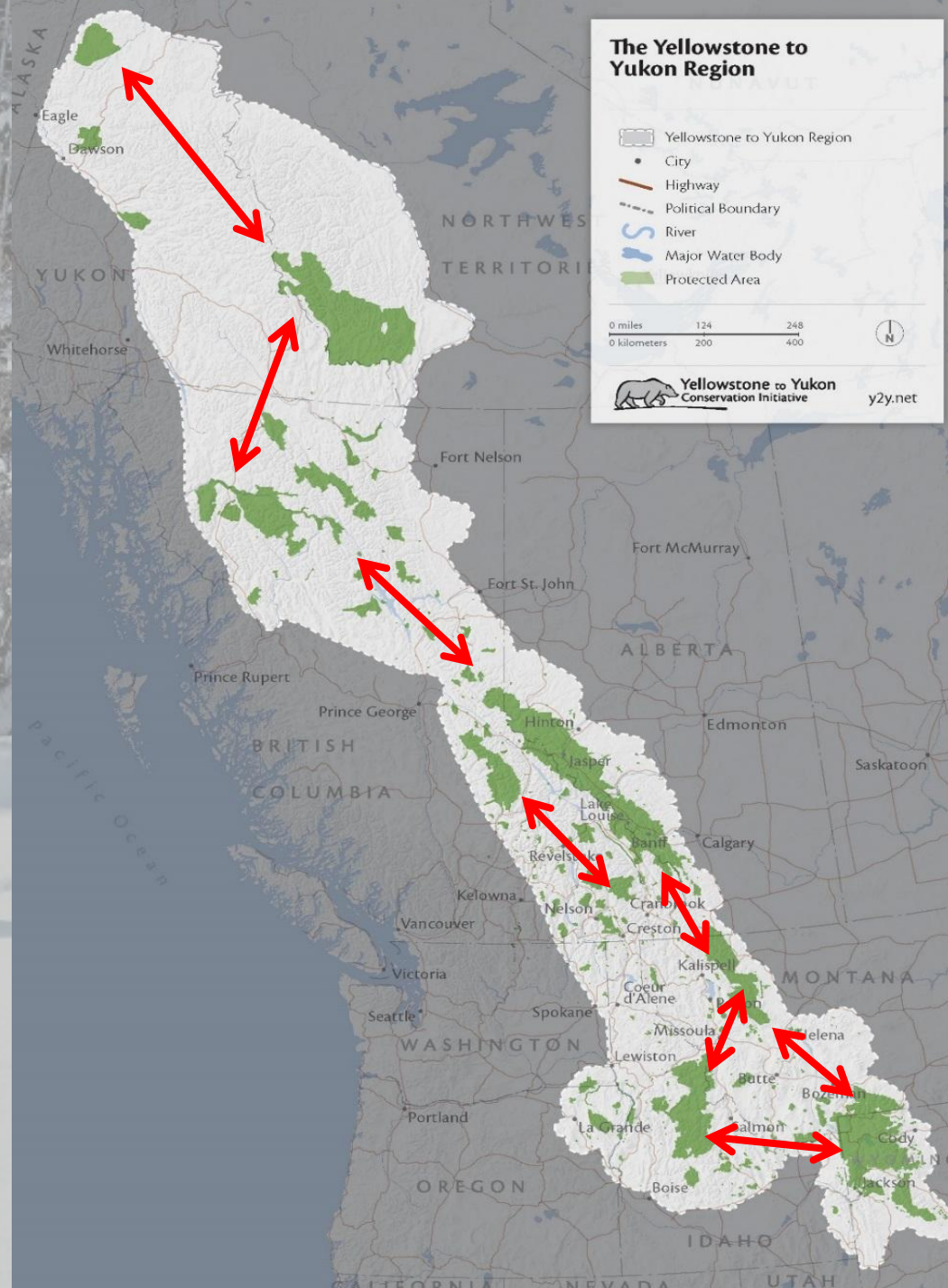
LENGTH

2100

MILES



**Connect and protect habitat
from the Yellowstone to the Yukon
so people and nature can thrive.**



A Community the size of the Mountain Region

2025 Y2Y partner grant recipients

Arrow Lakes Caribou Society
Central Selkirk Caribou Habitat Restoration

Glacier-Two Medicine Alliance
Central Crown Connectivity Initiative

Great Burn Conservation Alliance
Great Burn Habitat Restoration

Henry's Fork Wildlife Alliance
Bear Aware Outreach

Kaniksu Land Trust
Turnbull Conservation Easement

Outdoor Recreation Coalition of Alberta (ORCA)
Laying Groundwork – Responsible Recreation in the Ghost PLUZ

Ruby Habitat Foundation
Wildlife Speaker Event, Beavers

Shuswap Trail Alliance Society
Joss Mountain Recreation – Adaptive Management to Reduce Impact on Grizzly Bears

Tom Miner Basin Association
Range Riding for Reduced Conflict and Ecological Resilience

Wallowa Land Trust
Wallowa Gathering

Wild Moussa Photography
Documenting Local Wildlife

Wilps 'Wii K'aax, Lax Gibuu Kali Ax Gitxsan
Wilps 'Wii K'aax Territorial Stewardship Initiative, WWK-TSI

Yaak Valley Forest Council
A Bold Vision for Landscape Conservation and Grizzly Recovery in the Yaak Valley



30 years, over 800 partners





**Landscape
Connection**

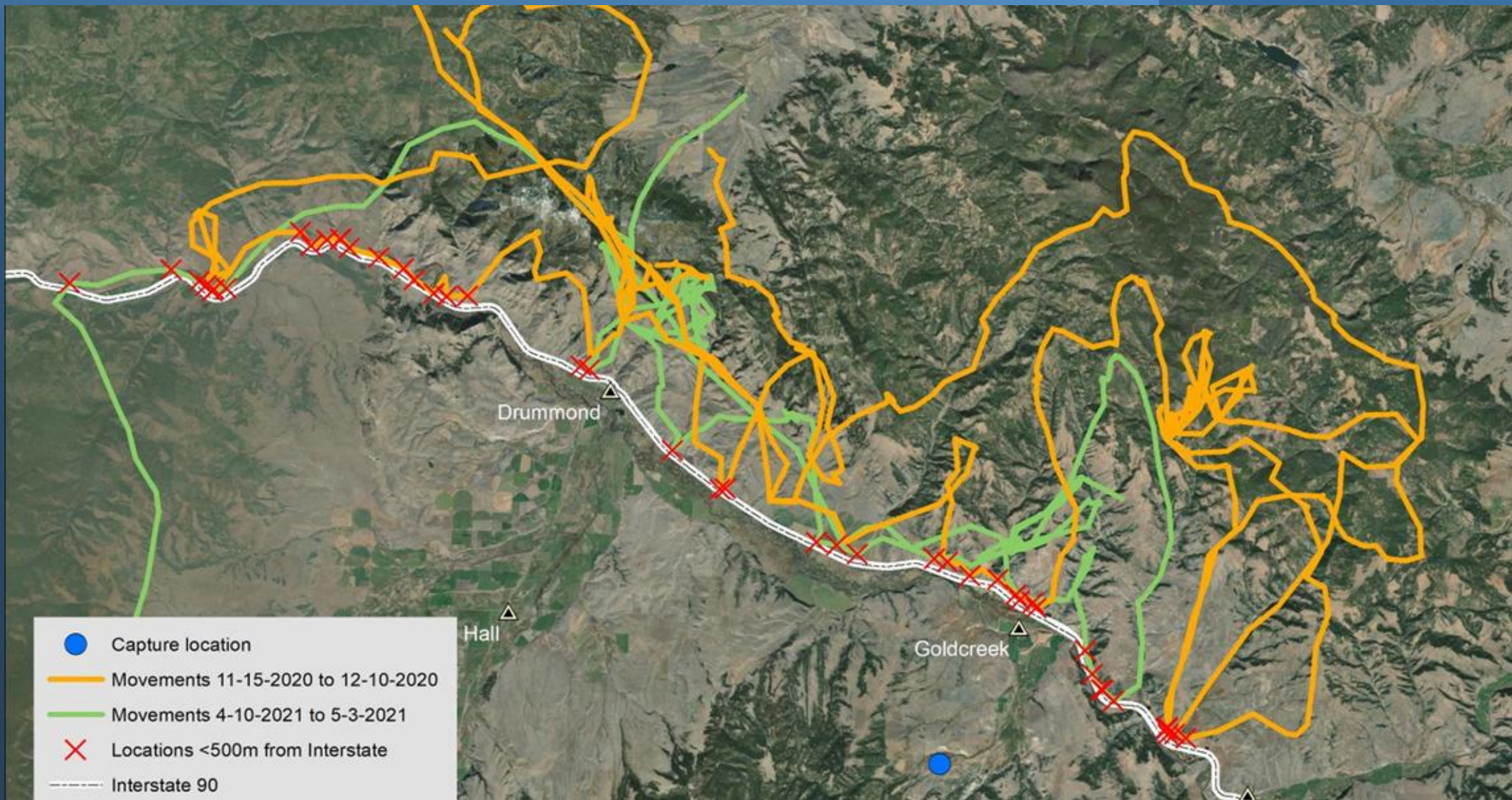


**Communities
&
Conservation**



- Land
- Infrastructure
- Umbrellas





WILDLIFE

Osburn's bridge to nowhere becomes a lifeline for Silver Valley's elk

Idaho's newest wildlife crossing didn't need to be built. It already existed near Coeur d'Alene.

Kylie Mohr September 22, 2025



Print



Email

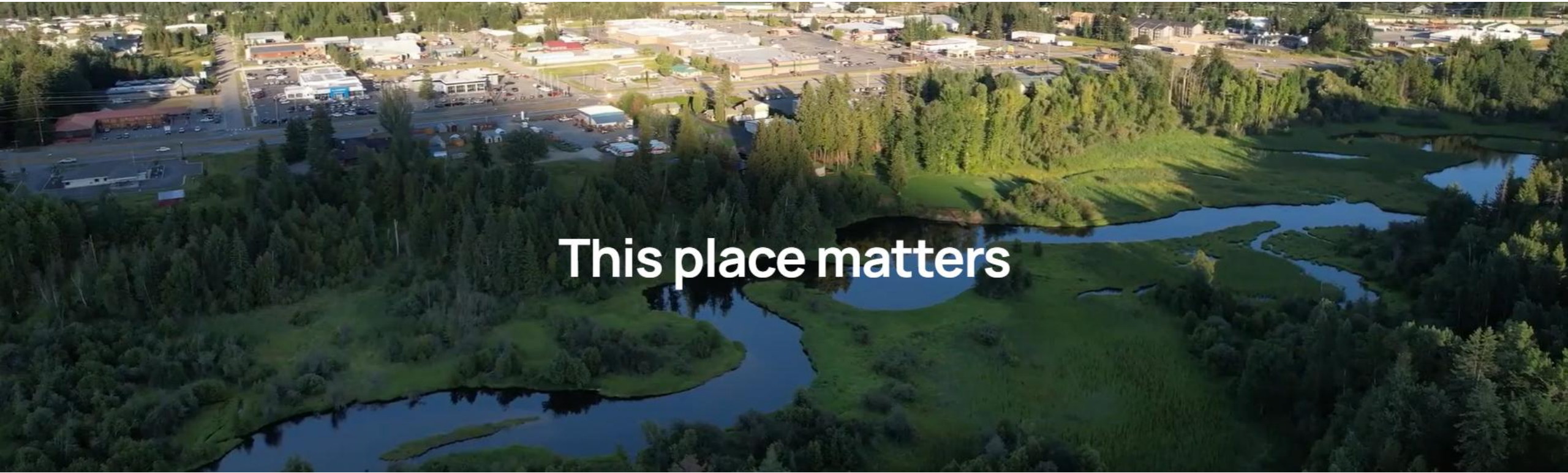


Save Article



More

Partnerships matter because



This place matters



Communities and Conservation Program



Urban



Rural



Backcountry

Conflict Prevention is Key!



Human-
wildlife
coexistence





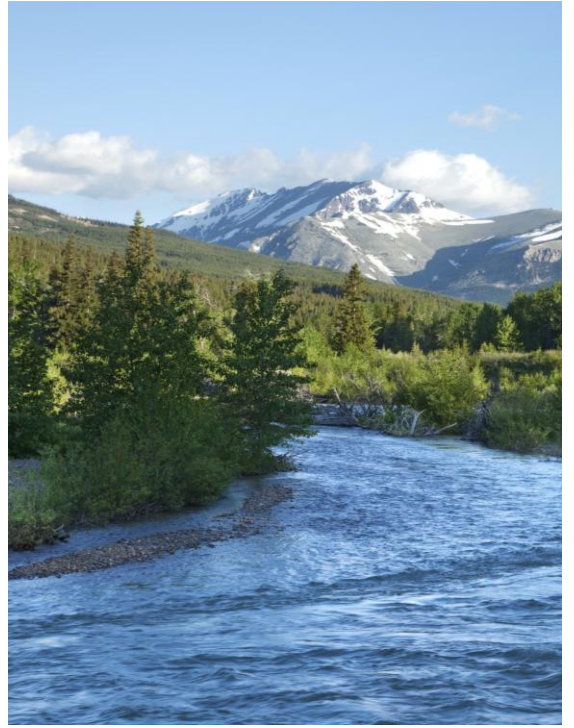
For communities to live with wildlife they need:

TOOLS TO PREVENT CONFLICT

RELIABLE FUNDING

SUPPORTIVE GOVERNMENT
POLICIES

ENABLING SOCIAL CONDITIONS



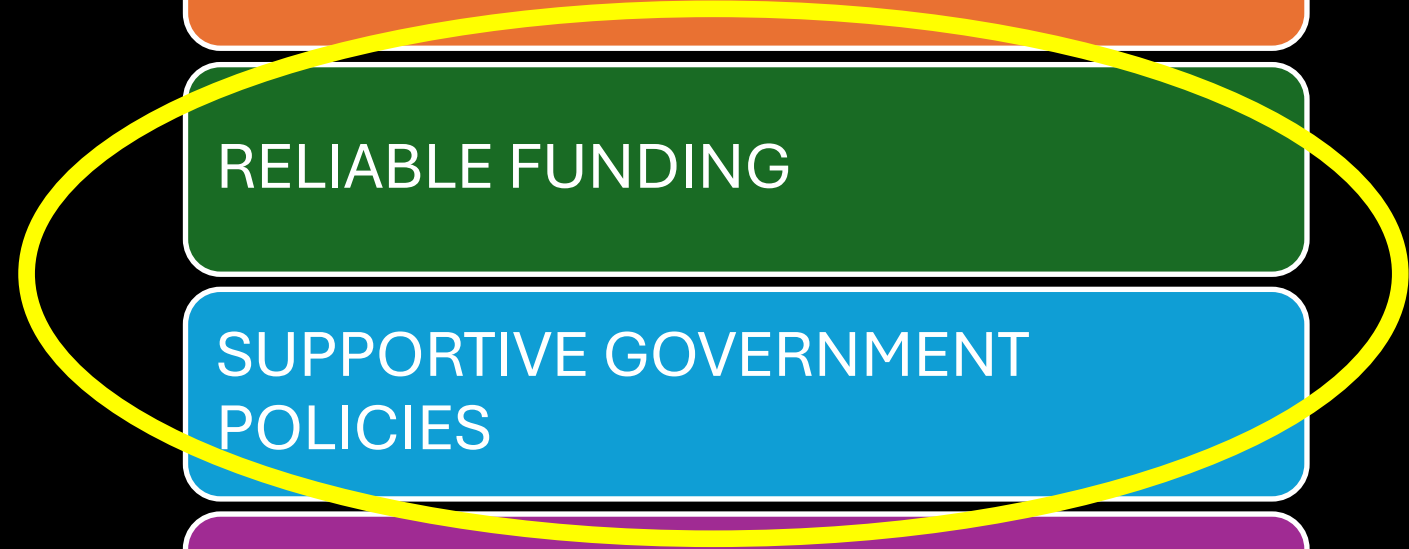
How we work at scale

TOOLS TO PREVENT CONFLICT

RELIABLE FUNDING

SUPPORTIVE GOVERNMENT
POLICIES

ENABLING SOCIAL CONDITIONS

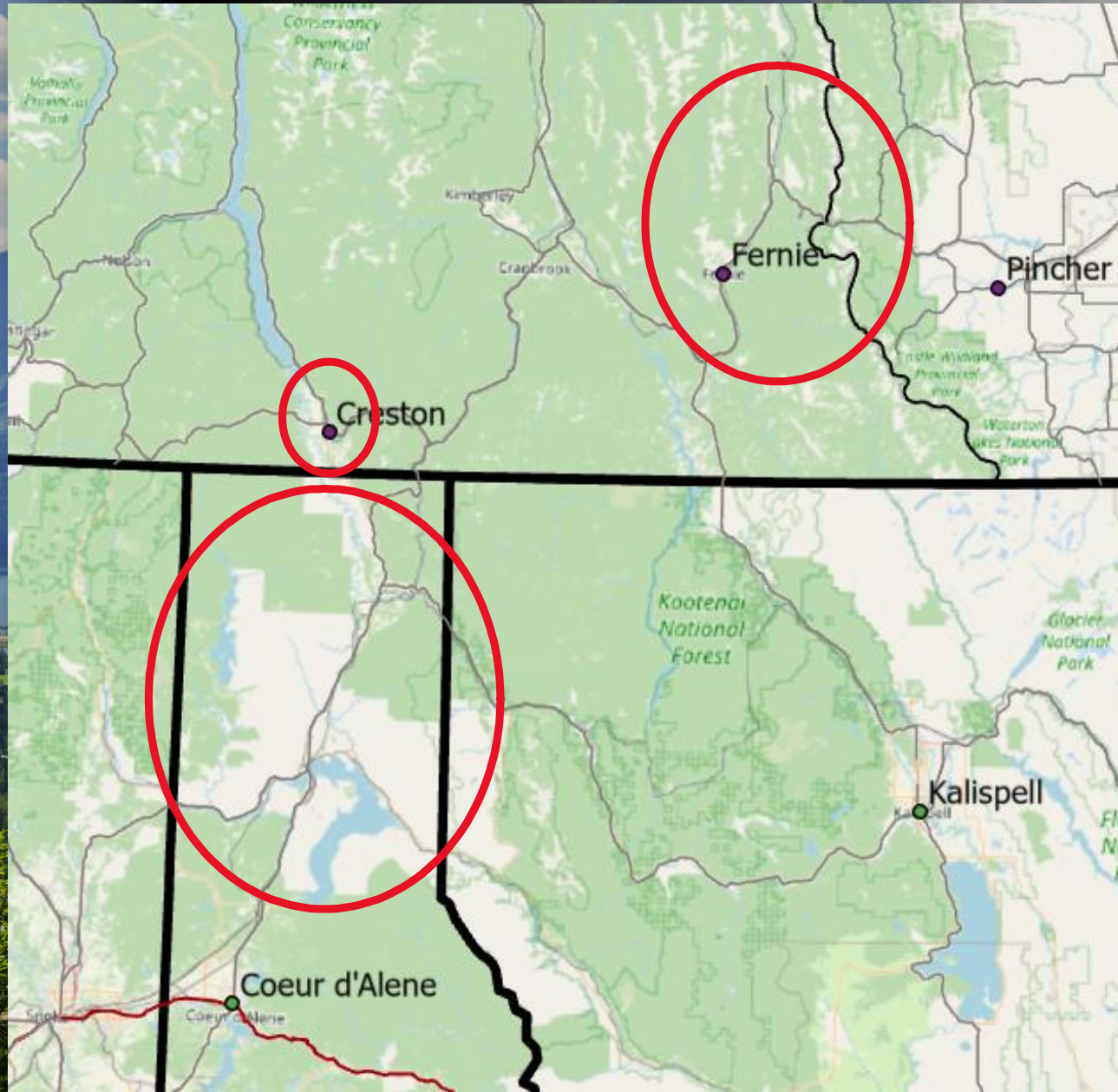




What is working?

**Bring models of
coexistence from one
jurisdiction to another**



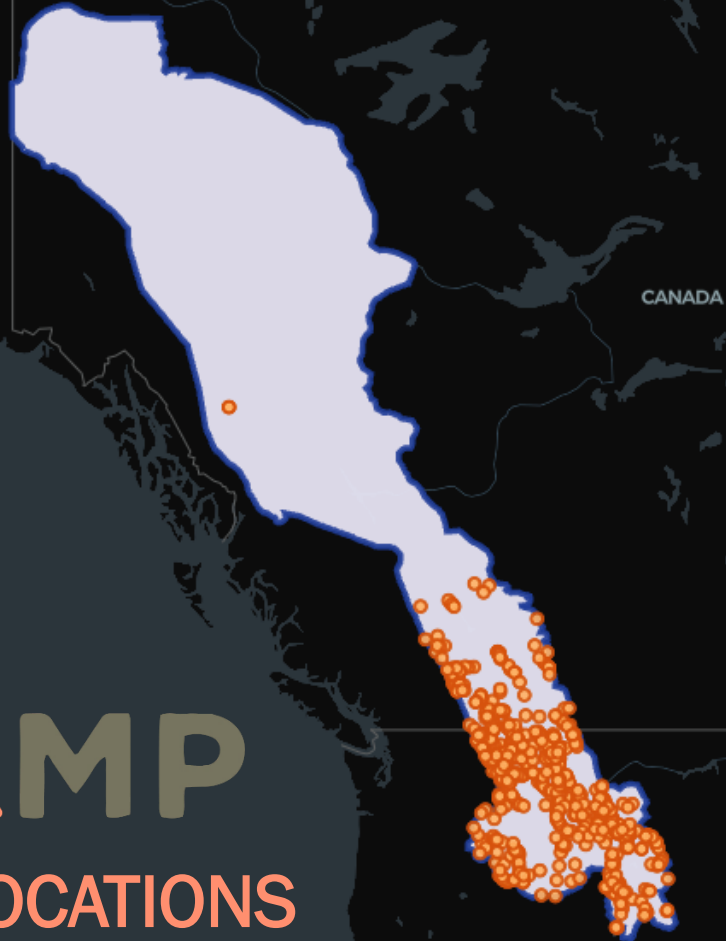


Supporting Communities In High Priority Areas



HIPCAMP

HOST LOCATIONS



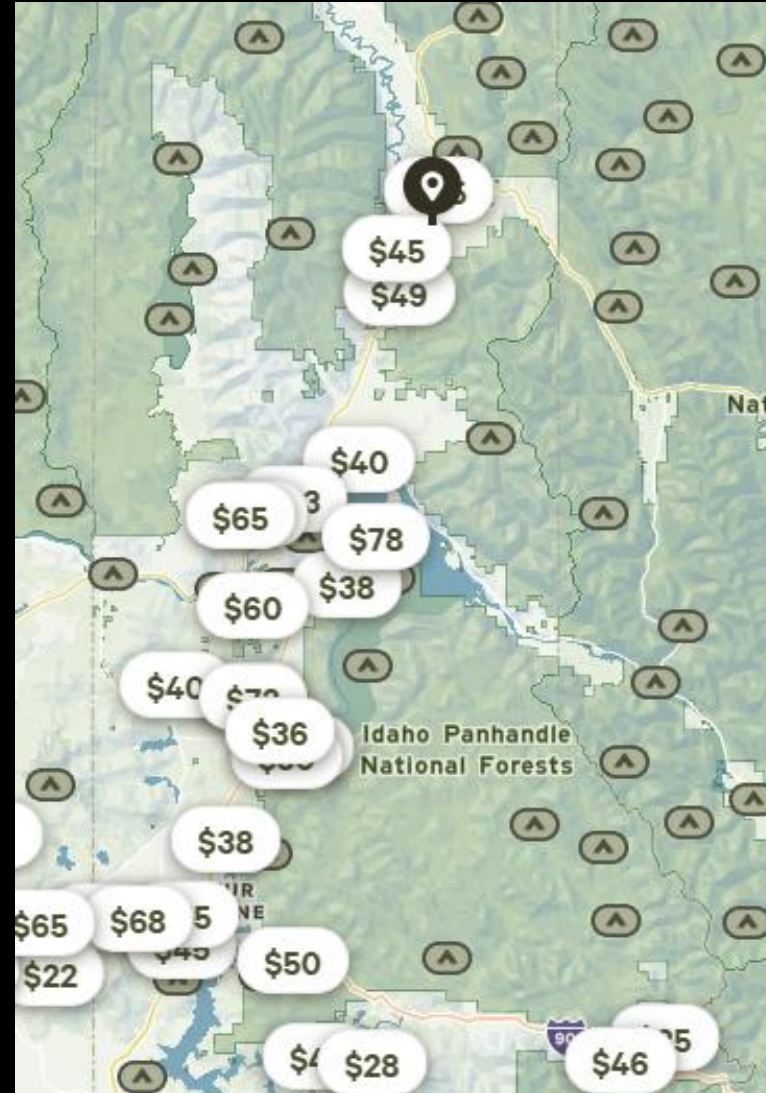
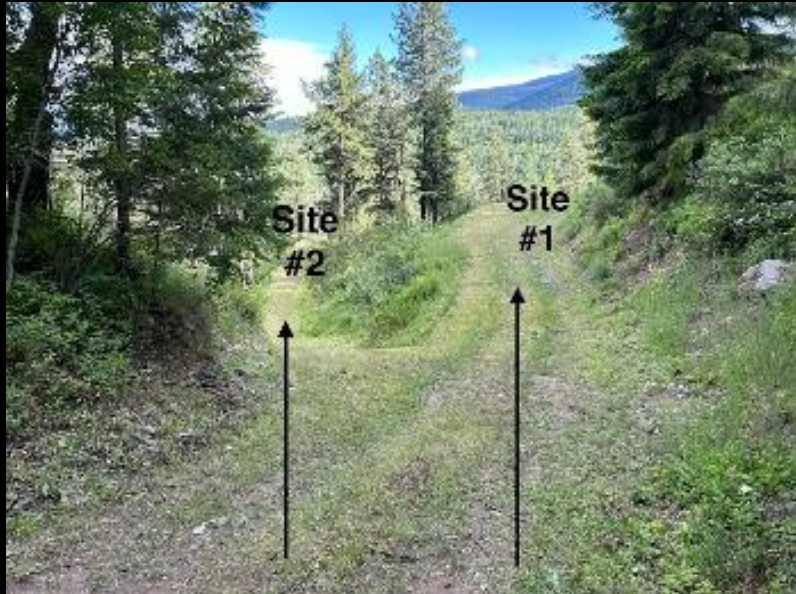
Everywhere you want to camp.

Hipcamp is the #1 app to discover and book tent campsites, RV resorts, glamping, and private land camping experiences in the United States, Australia, Canada, and the United Kingdom.



-  HOST LOCATIONS
-  Y2Y REGION

A Potential for Problems



Hipcamp Locations – North Idaho

Supporting Hipcamp Hosts



Expert advice and
resources



Communication
support



Problem-solving
support



Financial support

y2y.net/Hipcamp



Yellowstone to Yukon
Conservation Initiative

Supporting Hipcamp Hosts

Ready to host guests, not bears?

**Yellowstone to Yukon is offering Hipcamp hosts
\$500 for Bear-Smart improvements!**

Y2Y grants can support:

Electric fencing
Bear-resistant trash cans
Secure food storage containers
And more!

Small upgrades. Big impact.

Contact caitlin@y2y.net before funds run out!

HIPCAMP

y2y.net/Hipcamp



y2y.net/Hipcamp

Eric@y2y.net

Caitlin@y2y.net



**Yellowstone to Yukon
Conservation Initiative**

